

5/14/20 d/s: use county standard details for sidewalk curb and gutter...apply for encroachment permit when ready to proceed.

5/14/20 d/s: Please relocate to property line. OK to place low lying vegetation in this strip behind sidewalk. Slide steps toward house ok to leave a step-off pad behind sidewalk

5/14/20 d/s: Provide profile of driveway. Slope < 20%. Ok to conform to elevation at back of sidewalk.

LANDSCAPE NOTES:

A MINIMUM 3" LAYER OF MULCH SHALL BE APPLIED ON ALL EXPOSED SURFACES OF PLANTING AREAS EXCEPT TURF AREAS CREEPING OR ROOTING GROUNDCOVERS, OR DIRECT SEEDING APPLICATIONS WHERE MULCH IS CONTRAINDICATED.

TURF NOT TO EXCEED 25% OF THE LANDSCAPE AREA.

TURF NOT PERMITTED ON SLOPES GREATER THAN 25%.

AUTOMATIC WEATHER-BASED OR SOIL-MOISTURE BASED IRRIGATION CONTROLLERS SHALL BE INSTALLED ON THE IRRIGATION SYSTEM.

PRESSURE REGULATORS SHALL BE INSTALLED ON THE IRRIGATION SYSTEM TO ENSURE THE DYNAMIC PRESSURE OF THE SYSTEM IS WITHIN THE MANUFACTURER'S RECOMMENDED PRESSURE RANGE.

MANUAL SHUT-OFF VALVES SHALL BE INSTALLED AS CLOSE AS POSSIBLE TO THE POINT OF CONNECTION OF THE WATER SUPPLY

AREAS LESS THAN 10' OF WIDTH IN ANY DIRECTION SHALL BE IRRIGATED WITH SUBSURFACE IRRIGATION OR OTHER MEANS THAT PRODUCES NO RUNOFF OR OVERSPRAY.

AT THE TIME OF FINAL INSPECTION, THE PERMIT APPLICANT MUST PROVIDE THE OWNER OF THE PROPERTY WITH A CERTIFICATE OF COMPLETION, CERTIFICATE OF INSTALLATION, IRRIGATION SCHEDULE OF LANDSCAPE AND IRRIGATION MAINTENANCE.

UNLESS CONTRAINDICATED BY A SOILS TEST, COMPOST AT A RATE OF A MINIMUM OF 4 CUBIC YARDS PER 1,000 SF OF PERMEABLE AREA SHALL BE INCORPORATED TO A DEPTH OF SIX INCHES INTO THE SOIL.

PRESCRIPTIVE APPROACH:

PERMEABLE AREA OF SCOPE OF WORK IS LESS THAN 2,500 SF.

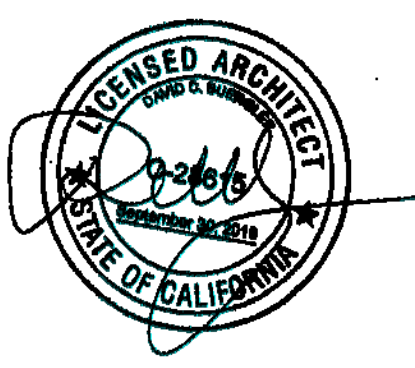
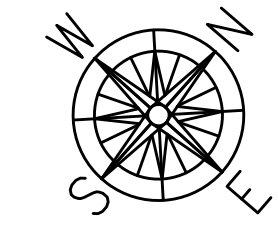
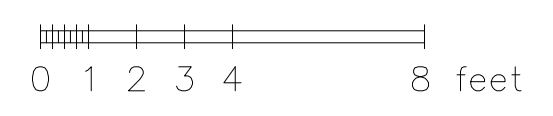
TREE STATUS:

ALL EXISTING TREES TO REMAIN.

ONE JAPANESE MAPLE TO BE RELOCATED AT EXPANDED DRIVE.

THERE ARE NO HERITAGE TREES WITHIN THE DESIGNATED SCOPE OF WORK.

1 FRONT ENTRY PLAN
SCALE: 1/4"=1'-0"



David Buegler,
Architect
1925 Hayes Street
San Francisco, CA 94117
tel 415-398-0744
david@davidbuegler.com

RESIDENCE
204 DEVONSHIRE BLVD
SAN CARLOS, CALIFORNIA

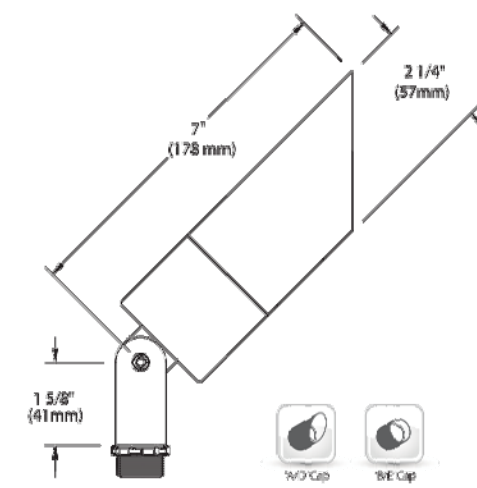
Sheet Title
SITE PLAN

Project No.	Sheet No.
Scale	A1.0
Date	
AS NOTED	
23 APRIL 2020	

DELTA STAR™

"I love this fixture because it gives me maximum flexibility! I can dim to get to the exact light balance on a project (sometimes I want a brighter background, other times I want a dimmer background). The ability to dim allows me to compose the scene like a painting, from on the ground instead of up in a tree. The interchangeable optics are another great feature, in case I get caught out, or when the plant material grows and I need a more open beam."

Linda Lees, Lightstudio Inc., BKU Fall 2012



Shown with 'K' Cap in Black Winkle (BLW) Finish

*Table for with 48V LED drivers is only available in aluminum and black. See page 107 for dimming and ballast information.

DELTA STAR™

PROJECT: _____

TYPE: _____

CATALOG NUMBER: _____

SOURCE: _____

NOTES: _____

CATALOG NUMBER LOGIC

Example: DS - LED - e65 - SP - A7 - B2W - 12 - 11 - A - 360SL

Material
Blank - Aluminum
B - Brass
S - Stainless Steel

Series
DS - Delta Star™

Source
LED - "i" Technology with Integral Dimming Driver (See Specifications for Dimming)
Designed for use with recessed TRIAC, 0-10V™, touchless, touchless magnetic low voltage dimmer

LED Type
e64 - 7W/LED 2.7K
e65 - 7W/LED 3K
e66 - 7W/LED 3K
e67 - 7W/LED Amber

Optics*
NSP - Narrow Spot (Red Indicator) MFL - Medium Flood (Yellow Indicator)
SP - Spot (Green Indicator) WFL - Wide Flood (Blue Indicator)

Adjust-e-Lume® Output Intensity (Power Reserve) See page 107 for dimming and ballast information

Finish

Aluminum Finish		Brass Finish		Premium Finish	
Powder Coat Color	Matte, Satin, Winkle	Machined	MAC	ABP	Antique Brass Powder
Bronze	B2P	B2W	POL	CMG	Cascade Mountain Granite
Black	BLP	BLW	MIT	CRJ	Cracked Ice
White (Gloss)	WHP	WHW	MIT	ADW	Antique White
Aluminum	SAP	---	---	CM	Cream
Verde	---	VER	---	BCM	Black Chrome
				HUG	Hunter Green
				BSE	Beige
				MDS	Mojave Desert Sandstone
				BPP	Brown Patina Powder
				NBP	Natural Brass Powder
				CAP	Clear Anodized Powder
				OCF	Old Copper
					Also available in AL, Finish See submittal 128-1439-00

Lens Type
12 - Soft Focus Lens
13 - Rectilinear Lens

Shielding
11 - Honeycomb Baffle

Cap Style
A - 45°
B - 90°
D - 45° less Weep Hole (Interior Use Only)
E - 90° less Weep Hole (Interior Use Only)

Option
360SL - 360SL™ Rotational Kevlar Mounting System

DRIVER DATA

Input Volts	Input Current	Operating Current	Dimmable	Operation Ambient Temperature
12VAC/DC 50/60Hz	<250mA (non-dimmed)	700mA	Magnetic Low Voltage Dimmer	-22°F-194°F (-30°C - 90°C)

LM79 DATA

BK No.	CCT (Typ.)	Input Watts (Typ.)	CRI (Typ.)	Minimum Rated Life (hrs.) 70% of Initial Lumen(L70)	Beam Type	Angle	e66 CBCP	Visual Indicator
e64	2700K	7.0	80	50,000	Narrow Spot	13°	6889	Red Dot
e65	3000K	7.0	80	50,000	Spot	19°	5223	Green Dot
e66	4000K	7.0	80	50,000	Medium Flood	23°	1984	Yellow Dot
e74	Amber (3900m)	7.0	-	50,000	Wide Flood	31°	1300	Blue Dot

L70 DATA

40429 Bridgelux Drive • Milpitas, CA 95038 • USA
550.438.8800 • FAX 550.438.5900
www.bridgelux.com • info@bridgelux.com

B-K LIGHTING

RELEASED: 06-07-16
DRAWING NUMBER: SUB000930

This document contains proprietary information of B-K LIGHTING, INC. and its receipt of possession does not confer any rights to reproduce, disclose its contents, or to manufacture, use or sell anything if any without the prior written permission of B-K LIGHTING, INC. IS STRICTLY FORBIDDEN.

LF ILLUMINATION

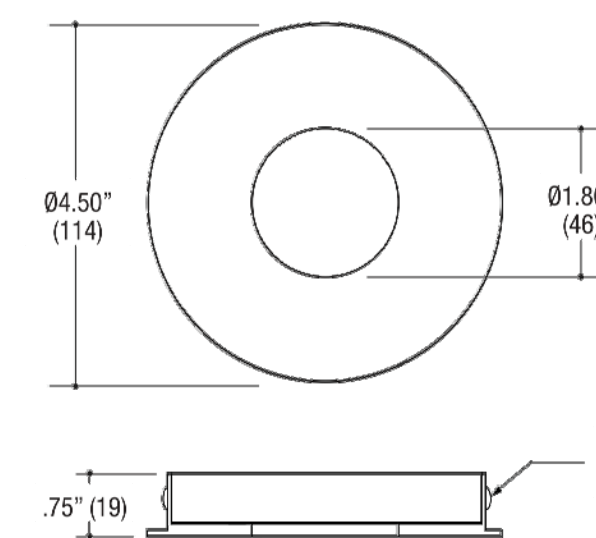
VF150 Series - 8901 Trim
RECESSED ROUND FLAT ACCENT 1-LIGHT

TRIMMED LED

PROJECT: _____ TYPE: _____ CATALOG NUMBER: _____

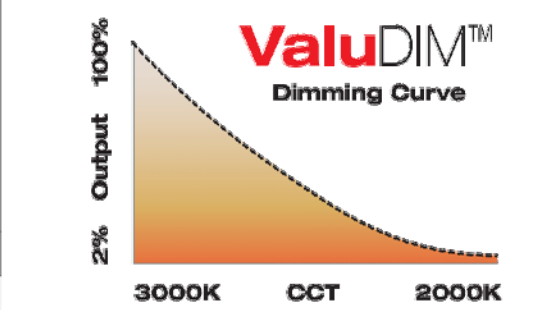
8901

ROUND FLAT TRIMMED ACCENT - The VF150 Series is a high efficiency family of products that meet and exceed the needs of today's lighting designers and specifiers that are seeking performance. Formed of die-cast aluminum.



Specifications

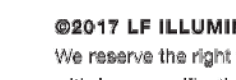
- ROUND TRIMMED DOWNLIGHT**
- Fixed or adjustable light output application
 - 4.50" round flat die-cast aluminum trim
 - Small 1.80" round aperture
 - 1.35" face trim
 - Accepts up to 2 or more optical accessories
 - Ball catch retainer for easy trim insertion and removal with safety cable included
 - Powder coat finish



TRIM ORDERING INFO

TRIM SERIES	TRIM FINISH	LAY-IN LENS / FILM
8901	MB White BX Black XX Custom	CL Clear Lens DL Diffused Lens DF Diffused Film WF Wide Distribution Film SHCL Shower Rated Clear Lens SHDL Shower Rated Diffused Lens SHDF Shower Rated Diffused Film SHWF Shower Rated Wide Distribution Film

Example: 8901-MB-SHCL

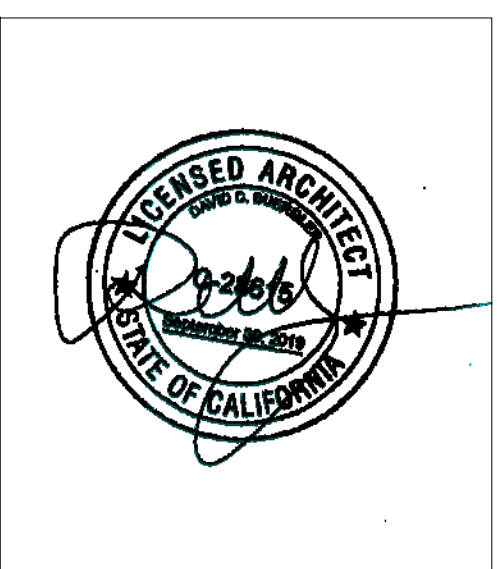


LF Illumination's new **ValuDIM™** warm dimming allows the features of warm dimming technology to be installed in fixtures and price points once thought impossible. The small footprint LED COB design uses many of our standard subassembly components and is compatible with virtually all standard dimming protocols currently available.

The LED itself maintains 95CRI typ (92CRI min) across the usable CCT range of 3000K to 2000K and dims down to around 2% visible light output. ValuDIM™ comes in three standard beam spread offerings of narrow, medium and wide.

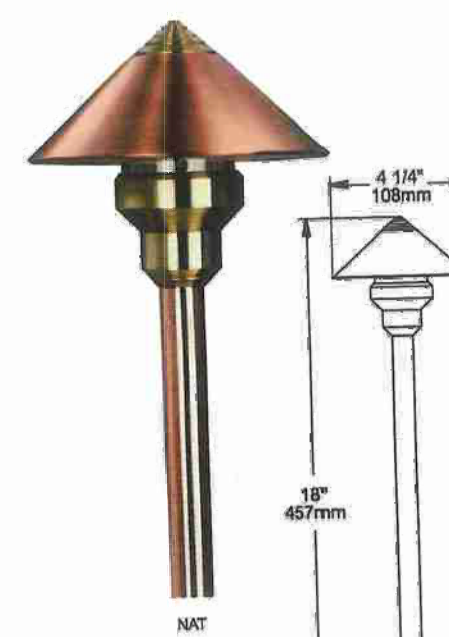


©2017 LF ILLUMINATION L.L.O. HEADQUARTERS: 6900 Deering Avenue, Chatsworth CA 91311 Telephone: 818-885-1330 Toll Free: 888-885-1335 Fax: 818-878-1336 www.lfillumination.com



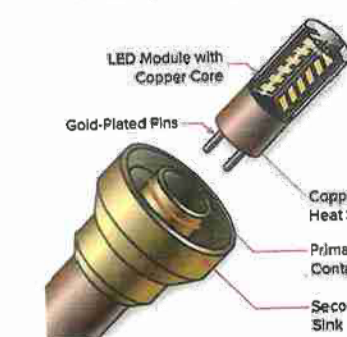
auroralight

HPL5 MADAGASCAR



The compact size of the HPL5 allows for it to be installed discretely into planters and is ideal for illuminating pathways and intimate garden areas. Use anywhere a less obvious light source is desired. With a timeless design, precision manufacturing and the highest quality materials, our HPL5 luminaires are the clear choice. Every HPL5 series path light gives you a choice of a Thermally Integrated™ Field Serviceable LED Module or traditional Halogen lamp. Using Copper Core™ Technology, the HPL5 module is specifically engineered to transfer heat away from the LED driver/circuit and dissipate throughout the luminaire, ensuring optimal performance, color consistency and long life!

- Features include:**
- Interchangeable LED Module in 2.5 or 3.5 Watts
 - 2700 or 3000K (CRI 80 typ.)
 - Thermally Integrated™ Field Serviceable LED Module
 - TRIAC Dimming to <10% typ.
 - 12 VAC Electronic or Magnetic Source Compatible
 - Solid Copper and Brass Construction
 - Patent Pending



ORDERING GUIDE HPL5: H (HYBRID) PL (PATH LIGHT) S (4 1/4" INCHES)

Light Source (LED or Halogen/Incandescent)	Accessories	Mount	Finish
For Halogen/Incandescent (T4 GY6.35) refer to lamp guide	(148) 160° Directional Reflector™ (272) 270° Directional Reflector™ (10) Internal Diffuser (Floated) *Visible light	(14) 1/2" Male Thread (18) Ground Stake (Default) (28) Deluxe Stake 9" (74) 1/2" Thread Stake (9" or 12") (78) Power Box of Stake (no. 60W 125-12V transformer) (84) 1/2" Federal Mount (88) 3 1/4" Surface Mount (88) 2 1/4" Surface Mount [X] = Specify Length NOTE: See Mount Guide for more options	(NAT) Natural (BLP) Bronze Living Path™ (BL-RED) BLP Burn Deck (NK) Nickel PVD

Lumen Output Table

Wattage	Color	Lumen
2.5W	2700K	205lm
2.5W	3000K	218lm
3.5W	2700K	296lm
3.5W	3000K	319lm

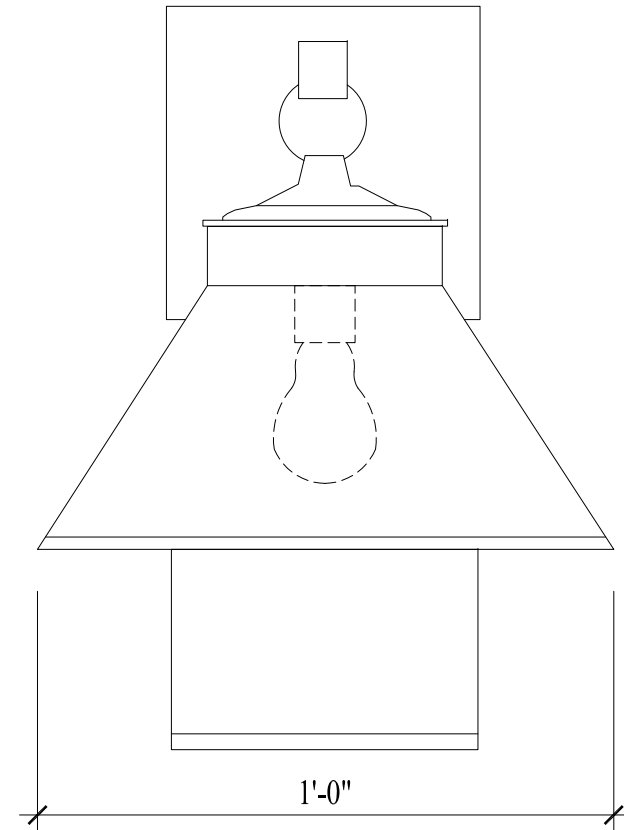
1 PORCH DOWNLIGHT
SCALE: NA

2 PORCH RECESSED LIGHT
SCALE: NA

3 PATHWAY LIGHTING
SCALE: NA

NOTES
All approved exterior light fixtures shall be installed. The bulb or light source shall be located entirely behind a non-translucent surface. No additional lights or alternate fixtures shall be installed without first being reviewed and approved by the permitting agency.

CLASSIC LIGHTING DEVICES
Custom exterior wall lantern-shielded light source
black painted copper



4 EXTERIOR LANTERN
SCALE: NA

David Buergler, Architect
1925 Hayes Street
San Francisco, CA 94117
tel 415-398-0744
david@davidbuergler.com

RESIDENCE
204 DEVONSHIRE BLVD
SAN CARLOS, CALIFORNIA

LIGHTING MANUFACTURERS SPECIFICATIONS

Project No.	Sheet No.
Scale	AS NOTED
Date	19 MAY 2020

E1.0



WALL AND ROOF SHINGLE EXAMPLE



WALL AND ROOF SHINGLE COLOR



BENJAMIN MOORE HC -187 BLACK FOREST GREEN

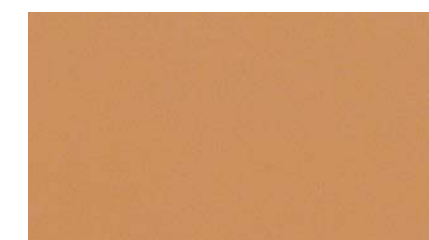


ANDERSON WINDOW/DOOR EXTERIOR COLOR SLATE

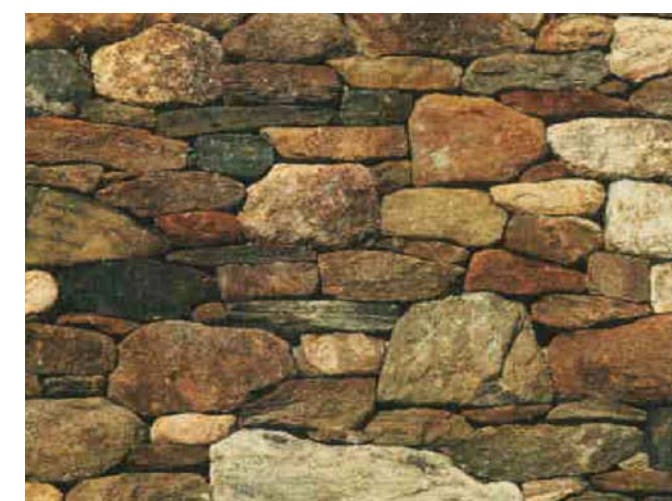


EXISTING STUCCO TO REMAIN COLOR MATCH TO WINDOWS AND WALK DOORS

LOW SLOPE METAL ROOF AND GUTTER CUSTOM BILT INC - "COPPER"



BENJAMIN MOORE HC -187 BLACK FOREST GREEN ALL TRIM, COLUMNS, RAILINGS, GARAGE DOORS

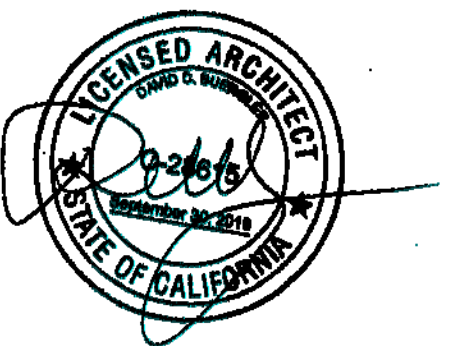


RANDOM STACKED STONE EXAMPLE



BENJAMIN MOORE HC -187 BLACK FOREST GREEN WOOD FENCE AND GATE

1 SOUTH ELEVATION
MAT SCALE: 1/4"=1'-0"



David Buegler,
Architect
1925 Hayes Street
San Francisco, CA 94117
tel 415-398-0744
david@davidbuegler.com

RESIDENCE
204 DEVONSHIRE BLVD
SAN CARLOS, CALIFORNIA

Sheet Title
COLOR BOARD MATERIALS

Project No.	Sheet No.
Scale	MAT
Date	

AS NOTED

19 MAY 2020